

Rollin Farm 若茵農場

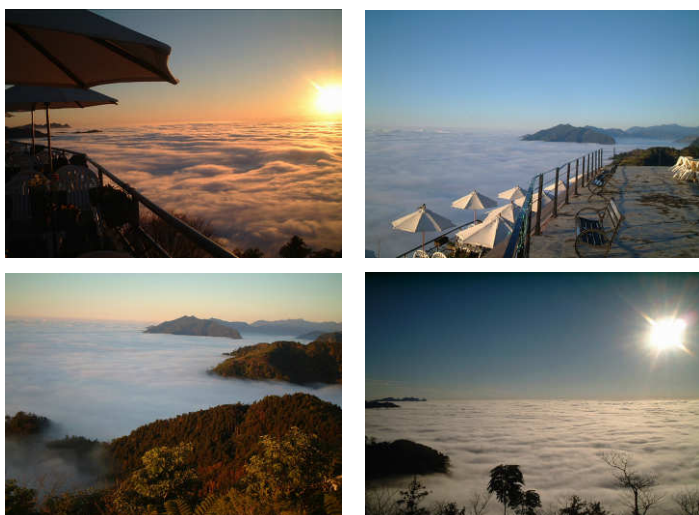
3-Day / 2-Night Package (民宿)

Validity: 16Dec16-31Mar17

\$2,160^{up}



Ref: CX_KA-RMQ-ROLLIN-16DEC16/AC200/EN100/970



一個離天和星星很近的地方!
若茵農場 (民宿)

Optional Transfer (till 31Mar17)
台中機場/台中市區/台中高鐵 ⇄ 若茵農場
每車每程 HKD440 (六人座-4人以下+行李) /
HKD510 (九人座-Max. 7人+行李)

想拋下繁忙的工作壓力回歸自然、投身山林的懷抱?
若茵農場絕對能讓你感受大都市不能體驗之簡樸生活。濃厚的鄉土氣息, 美景盡收眼底。壯闊的溪谷景致和飄渺翻騰的雲海就在腳下, 若茵農場與天很近, 是一處適合觀星、賞流星雨的最佳場所。
若茵農場位於台中縣和平鄉中坑村, 從東勢往大雪山森林遊樂區行走東坑路約 15 公里。

Accommodation	Room Type	Period of stay	Breakfast	Adult			Child	Extra Night (per room per night)			
				Twin	Single	Extra Bed	Extra Bed	Twin Share	Single	Extra Bed	
若茵農場* Rollin Farm www.rollin.com.tw	景觀 2 人房 (1 大床)	Till 31Dec16	YES	2,390	3,640	-	-	1,390	1,390	-	
		Hotel Surcharge (per room per night): 16Nov-31Dec16 (Fri & Sun) Twin HKD170, Single HKD170 / 16Nov-31Dec16 (Sat) Twin HKD320, Single HKD320									
	1Jan-31Mar17	YES	2,410	3,680	-	-	1,410	1,410	-		
	Hotel Surcharge (per room per night): 1Jan-31Mar17 (Fri & Sun) Twin HKD160, Single HKD160 / 1Jan-31Mar17 (Sat) Twin HKD310, Single HKD310										
	Room Type	Period of stay	Breakfast	Adult			Child		Extra Night (per room per night)		
				4 Pax Share	3 Pax Share	Twin	4 Pax Share	3 Pax Share	4 pax share	3 pax share	Twin
	景觀 2 人房 (兩大床)	Till 31Dec16	YES	2,160	2,310	2,550	1,950	2,100	2,170	1,860	1,550
Hotel Surcharge (per room per night): 16Nov-31Dec16 (Fri & Sun) Twin HKD190, Triple HKD190, Quad. HKD190 / 16Nov-31Dec16 (Sat) Twin HKD360, Triple HKD360, Quad. HKD360											
	1Jan-31Mar17	YES	2,170	2,330	2,570	1,960	2,120	2,190	1,880	1,570	
Hotel Surcharge (per room per night): 1Jan-31Mar17 (Fri & Sun) Twin HKD190, Triple HKD190, Quad. HKD190 / 1Jan-31Mar17 (Sat) Twin HKD360, Triple HKD360, Quad. HKD360											

*若茵農場房間不設電視、冰箱、空調、電話。配合響應環保, 將不提供毛巾、浴巾、牙膏、牙刷等用品

Blackout dates: 31Dec16-2Jan17, 26Jan-1Feb17, 24-28Feb17

Not valid for Japan, Taiwan & China market



Rollin Farm 若茵農場

3-Day / 2-Night Package (民宿)

Validity: 16Dec16-31Mar17

\$2,160^{up}



Ref: CX_KA-RMQ-ROLLIN-16DEC16/AC200/EN100/970

Optional Stay at Taichung 台中 (per room per night)

Forte Orange Business Hotel 福泰桔子商旅 (公園店) 3* http://www.forte-hotel.net/ From HK\$590 up	Holiday Inn Express Taichung Park Hotel 台中公園智選假日飯店 4* http://www.holidayinnexpress.com.tw/ From HK\$610 up	Evergreen Laurel Hotel 台中長榮桂冠酒店 5* http://www.evergreen-hotels.com From HK\$780 up
---	---	--

Other hotels in Taichung, please contact us for details

Please state "CX/KA GV2 fare IN (date) OUT (date) at (hotel name)" at OSI field in PNR.

Air Fare Surcharge for High Season & Upsell Class

Date	Flights Restrictions	Ticket validity	Class	Adult	Child
HKG-CX,KA-RMQ-CX,KA-HKG HKG-CX,KA-RMQ//TPE,KHH-CX,KA-HKG or v.v.					
16-21Dec16, 28-29Dec16, 1-25Jan17, 3Feb-30Mar17	HKG/TPE valid on CX496/494/406/564/466/472/400/408 & TPE/HKG valid on CX463/471/475/495/405/401/409/451/KA487/483 HKG/KHH valid on KA452/442/440/436/450 & KHH/HKG valid on KA453/443/441/457 HKG/RMQ valid on KA490 & RMQ/HKG valid on KA491	2-7 days	Q	NIL	NIL
16-21Dec16, 28-29Dec16, 1-25Jan17, 3Feb-30Mar17	HKG/TPE valid on CX496/450/494/406/564/466/472/400/408/KA486/482 & TPE/HKG valid on CX463/471/475/495/405/401/409/451/531/KA487/483 HKG/KHH valid on KA452/432/440/442/436/450 & KHH/HKG valid on KA451/453/433/441/443/437/457 HKG/RMQ valid on KA490 & RMQ/HKG valid on KA491	2-7 days	N	170	120
16-21Dec16, 28-29Dec16, 1-25Jan17, 3Feb-30Mar17	HKG/TPE valid on CX496/450/494/406/564/466/472/400/408 or KA5496/5450/5494/5406/5564/5466/5472/5400/5408 or KA operating flights or CX codeshare flights operated by KA TPE/HKG valid on CX463/471/475/495/405/473/401/409/451/531 or KA5463/5471/5475/5495/5405/5473/5401/5409/5451/5531 or KA operating flights or CX codeshare flights operated by KA HKG/KHH valid on CX5452/5432/5442/5440/5436/5450 or KA452/432/442/440/436/450 KHH/HKG valid on valid on CX5451/5453/5433/5443/5441/5437/5457 or KA451/453/433/443/441/437/457 HKG/RMQ valid on CX5490 or KA490 & RMQ/HKG valid on CX5491 or KA491	2-7 days	N	310	230
16-21Dec16, 28-29Dec16, 1-25Jan17, 3Feb-30Mar17	HKG/TPE NOT valid on CX474/KA5474	2-7 days	N (GV1)	570	420
16-21Dec16, 28-29Dec16, 1-25Jan17, 3Feb-30Mar17	HKG-CX,KA-RMQ-CX,KA-HKG HKG-CX,KA-RMQ//TPE,KHH-CX,KA-HKG or v.v.	2-7 days (extended to 14days surcharge HK\$500/person)	V	890*	660*
22-27Dec16, 30-31Dec16, 31Mar17			L	1,230	920
26Jan-2Feb17			M	1,810	1,350

* Low season upselling from V-class to L-class is permitted at ADDITIONAL HKD100 per sector

Business Class Surcharge

16-21Dec16, 28-29Dec16, 1-25Jan17, 3Feb-30Mar17	HKG-CX,KA-RMQ-CX,KA-HKG HKG-CX,KA-RMQ//TPE,KHH-CX,KA-HKG or v.v.	2-7 days	I	1,710	1,280
22-27Dec16, 30-31Dec16, 31Mar17				2,410	1,800
26Jan-2Feb17				2,710	2,030
16-21Dec16, 28Dec16-25Jan17, 3Feb-31Mar17	HKG-CX,KA-RMQ-CX,KA-HKG HKG-CX,KA-RMQ//TPE,KHH-CX,KA-HKG or v.v.	2-7 days (extended to 14days surcharge HK\$500/person)	D	2,670	2,000
22-27Dec16, 26Jan-2Feb17				3,870	2,900

Rollin Farm 若茵農場

3-Day / 2-Night Package (民宿)

Validity: 16Dec16-31Mar17

\$2,160^{up}



Ref: CX_KA-RMQ-ROLLIN-16DEC16/AC200/EN100/970

以上價格包括:

- 國泰/國泰港龍航空來回香港至台中經濟客位機票(電子機票)
- 2 晚住宿於若茵農場
- 每天酒店早餐(只限指定酒店)
- 飛行保險港幣 1,000,000 元 (最多 14 天)
- 香港機場保安稅
- 0.15% 旅遊業議會印花稅

備註:

- 訂位代號/機票有效期: (請參閱上列附加費表)
- 適用於 CX/KA 營運航班 / 累積飛行哩數之訂位代號請瀏覽 www.asiamiles.com
- 酒店住宿必須於 17 年 3 月 31 日或之前完成。(特別註明除外)
- 最少兩人(支付成人價錢)同行, 所有同行客人之行程、航班必須相同(於同一電腦代號(PNR)內訂位), 並必須於去程及回程時一同辦理登機手續。
- 以上價錢於旺季及交易會期間或需繳付附加費。
- 如只預訂房間或作不連續住宿, 酒店價目及條款或會有所調整及變動。
- 傳單上所列明的交通訊息或時間(例: 航班/車次)如有任何更改, 均以官方資訊為準, 恕不另行通知。
- 旅遊套餐不得更改航班 / 日期 / 行程及不可退款。
- 以上價格不包括所有有關稅項及附加費。價格如有任何變更恕不另行通知。